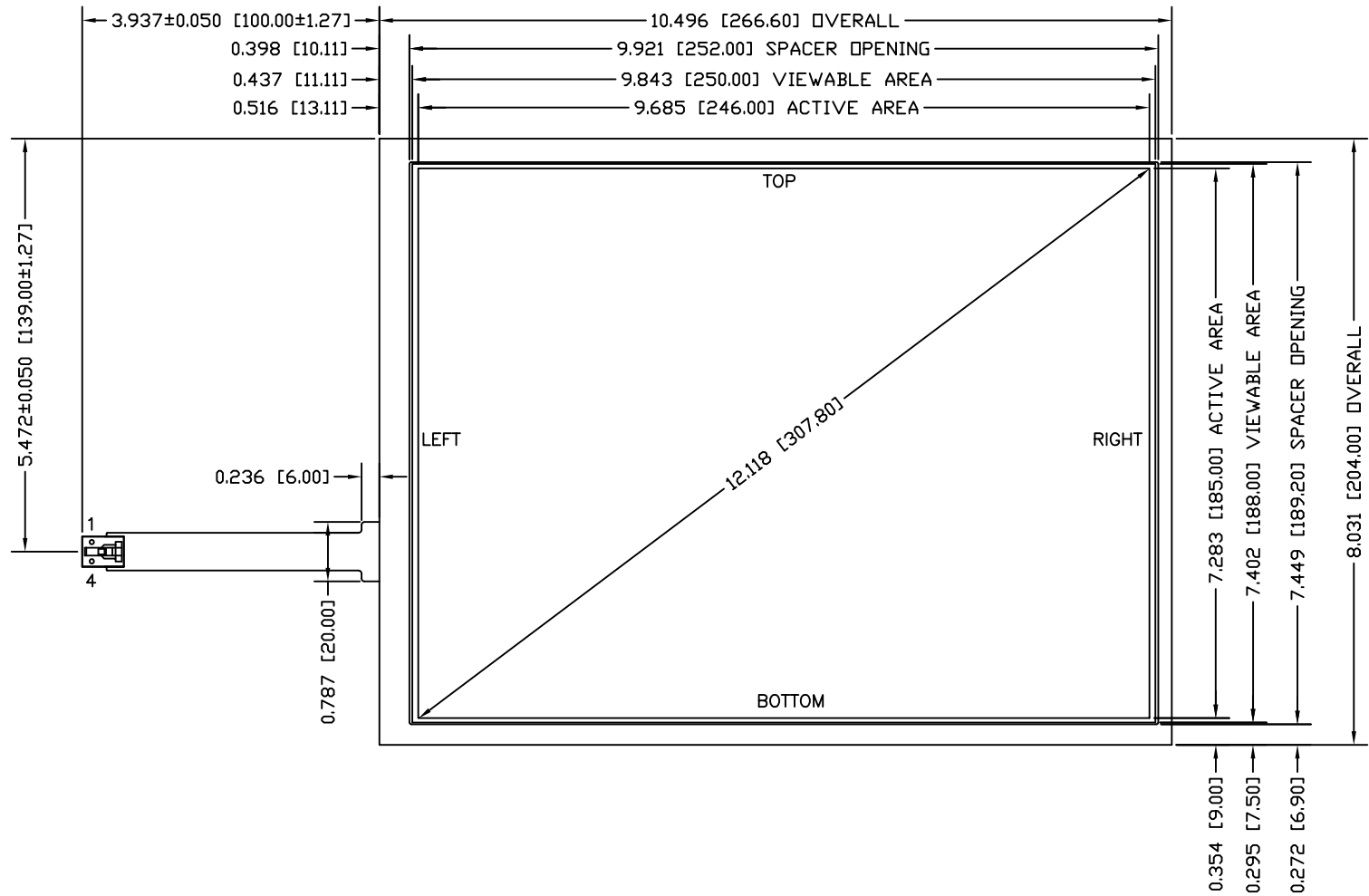
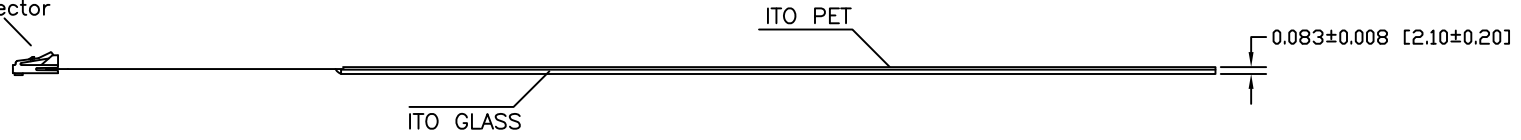


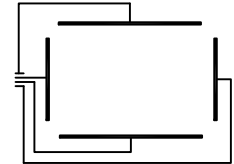
REV	INITIALS	DATE	DESCRIPTION



4 Pin 2.54mm Pitch  
Female Connector



- NOTES:
- TOLERANCE ±0.020 UNLESS NOTED OTHERWISE.
  - TOP CONDUCTIVE LAYER TO HAVE AN ANTI-GLARE HARDCOATED SURFACE.
  - PIN ONE IS DESIGNATED BY THE NUMERICAL NUMBER 1 BY CONNECTOR END.
  - PINOUT TO BE AS INDICATED.  
PIN 1 - TOP.  
PIN 2 - LEFT.  
PIN 3 - BOTTOM.  
PIN 4 - RIGHT.
  - TAIL TYPE: IMMERSION GOLD PLATED FPC WITH AMP LATCH STYLE HOUSING.



PIN DIAGRAM

BERGQUIST TOUGH PRODUCTS			
301 WASHINGTON STREET CANNON FALLS, MN 55009			
TITLE:	12.1 DIAGONAL 4-WIRE ROHS COMPLIANT		
DRN:	MLR	DATE:	5/30/08
CHKD:		DATE:	
APVD:		DATE:	
TOL:	±0.020	DWG #	9542A
PART #:	400431	REV	